

Application of Cepstrum Analysis and Linear Predictive Coding for Motor Imaginary Task Classification

Shiu Kumar^{1,2}, Alok Sharma^{2,3,4}, Kabir Mamun², Tatsuhiko Tsunoda^{4,5,6}

¹Department of Electronics Engineering, Fiji National University, Suva, Fiji

²School of Engineering & Physics, University of the South Pacific, Suva, Fiji

³Institute for Integrated and Intelligent Systems (IIIS), Griffith University, Brisbane, Australia

⁴RIKEN Center for Integrative Medical Sciences, Yokohama 230-0045, Japan

⁵CREST, JST, Yokohama 230-0045, Japan

⁶Medical Research Institute, Tokyo Medical and Dental University, Tokyo 113-8510, Japan

shiu.kumar@fnu.ac.fj

Abstract—In this paper, classification of electroencephalography (EEG) signals of motor imaginary tasks is studied using cepstrum analysis and linear predictive coding (LPC). The Brain-Computer Interface (BCI) competition III dataset IVa containing motor imaginary tasks for right hand and foot of five subjects are used. The data was preprocessed by applying whitening and then filtering the signal followed by feature extraction. A random forest classifier is then trained using the cepstrum and LPC features to classify the motor imaginary tasks. The resulting classification accuracy is found to be over 90%. This research shows that concatenating appropriate different types of features such as cepstrum and LPC features hold some promise for the classification of motor imaginary tasks, which can be helpful in the BCI context.

Keywords—BCI; cepstrum analysis; EEG; filtering; LPC; random forest.

I. INTRODUCTION

With the increasing number of research in the BCI field, understanding of the brain waves is gaining huge importance. BCI or Brain-Machine Interface (BMI) and its application has become one of the hot research topics with the advances in technology aiming to make lives of people easier. A BCI system allows to communicate with others or to generate control signals for controlling devices such as machines, electric wheelchair [1, 2], artificial limbs or robots [3-6] by utilizing the brain's neural activity without requiring any muscle control or direct physical movement [7-10]. The major focus and emphasis of BCI research is in the field of biomedical engineering [11-15].

BCI could be beneficial in restoring valuable functions of severely disable people. The first BCI application was developed in 1964 [16] by Grey Walter. The application used EEG recordings for controlling a slide projector. With technological advancements, devices having low cost and reduced complexity such as Neurosky Mindwave [17] device and Emotiv EPOC/EPOC+ headset [18] have been

developed, which are widely accepted and used in BCI research and applications.

BCI systems based on EEG signal have gained widespread interest due to their potential uses. The EEG signal is recorded using non-invasive sensors making it safer and easy to use. However, the EEG signal is contaminated by other noises such as Electrocardiogram (ECG), Electrooculogram (EOG) and Electromyogram (EMG). Adaptive filters and blind source separation (BSS) techniques [19, 20] can be utilized to effectively remove the EOG and ECG artifacts. For the removal of muscular artifacts, researchers have explored the use of ICA [21-23], a BSS technique.

A BCI system usually involves these processes: data acquisition, preprocessing, feature extraction and classification (for the purpose of generating control signals). Preprocessing is done on the acquired signal to remove the noise/artifacts. For feature extraction, a number of feature extraction techniques such as power spectral density (PSD), R (ratio of α and β activities) [24], Common Spatial Pattern (CSP) [25, 26], statistical features, Self-Organizing Maps (SOM), Fractal Dimension (FD), correlation, Granger causality, spectral coherence [27] and information entropy [28, 29] have been studied. A number of classifiers such as support vector machine (SVM) [24, 30-36], K-Nearest Neighbors (KNN) [37-39], Random Forest (RF) [40], etc. have been used. SVM and Linear classifiers [41-44] have also been widely used for other applications.

All the above research works have contributed positively to the field of BCI. However, to the authors knowledge no research has been carried out to study the use of cepstrum and LPC features for EEG signal classification of motor imaginary tasks. In this research, the widely used speech recognition feature extraction methods; cepstrum analysis and LPC will be studied and applied for the classification of EEG signals. A random forest classifier will be used for classification. Various feature extraction methods have been

proposed and studied. However, feature extraction techniques such as canonical correlation analysis, common spatial pattern (CSSP) and common sparse spectral pattern (CSSSP) [45] are computationally expensive. Therefore, the computational time for feature extraction can be reduced by the use of LPC features.

This paper is organized as follows. In section II, a brief description of related literature works that have been carried out is presented. Section III presents the description of the dataset used and the proposed method respectively. In section IV, the results are presented while section V concludes the important findings of this paper.

II. RELATED WORKS

In the realization of an EEG-based BCI system, generally three phases are involved: (i) recording the brain activity by placing electrodes located on the scalp and pre-processing the recorded brain wave (EEG signal) for artifact removal, which improves the signal-to-noise ratio (SNR); (ii) feature extraction from the pre-processed EEG signal in order to obtain meaningful information; (iii) classification of the signals using the features in order to translate them into control commands and drive external devices. Several EEG-based BCI applications such as wheelchair controllers [2, 46], and word speller programs [47] have been successfully developed. A BCI system can be employed for various reasons such as to understand our mental states and to control devices via thought without any muscle activity. Automatic emotion recognition [30, 48] is one such application, which potentially bridges the gap between human and machine interactions.

A number of researchers have proposed different noise removal and feature extraction techniques. The common artifact removal methods are adaptive filters and BSS technique. A Cycle Spinning Wavelet Transform ICA (CTICA) method for denoising the EEG signal is presented in [49]. The authors argue that it is the most accurate separation method. The method uses cyclic spinning and merges Translational Invariant Wavelet Transform (TIWT), Unscented Kalman Filter (UKF) and ICA. The method outperformed Fast ICA and Efficient Fast ICA (EFICA).

Novi et. al. [26] proposed a sub-band common spatial pattern (SBCSP) method for feature extraction aiming to tackle the problem of varying rhythmic patterns between different subjects. The EEG signal is decomposed into sub-bands using a filter bank. Then a discriminative analysis is used for extracting the SBCSP features. A Linear Discriminant Analyzer (LDA) with the SBCSP features as the inputs is used to obtain scores. The classification capability of each frequency band is reflected by these scores. The scores are then fused, using Recursive Band Elimination (RBE) and Meta-Classifer (MC), for making a decision. The BCI competition III dataset IVa have been used to assess the performance of the SBCSP method. Other methods that have been proposed in the literature for selecting the optimal frequency bands automatically are common spatial pattern (CSP), CSSSP [45], discriminative filter band CSP (DFBCSP) [50], and adaptive filters.

LPC features have been widely used in speech recognition and its use and effectiveness for EEG signal classification will be studied in this research. In [51], the authors combined the Mel Frequency Cepstral Coefficients (MFCC) with LPC features for the purpose of speaker identification. Ten LPC and twelve MFCC features are extracted from each sample. An artificial neural network (ANN) has been used for recognition and identification of the speech signal. In [52], a new hybrid method for optimizing the extraction of accent in ethnically diverse Malaysian English from speech utterances over facets using LPC obtained from DWT is proposed. Using hybrid dyadic-X DWT-LPC features attained an increase of 9.28% classification accuracy compared to the conventional LPC method. In [53] and [54], LPC features have been used for emotion recognition (in Romanian Language) and speaker recognition respectively.

III. METHODOLOGY

A. EEG Data Description

Dataset IVa from BCI competition III, which is provided to the public by Fraunhofer FIRST (Intelligent Data Analysis Group) have been used [55, 56]. The dataset IVa consists of EEG signals for motor imaginary tasks, namely right hand and left foot. It contains the EEG signals from 118 channels at positions of the extended international 10/20 system [57], which are recorded from five subject's referred to as *aa*, *al*, *av*, *aw* and *ay*. The signal was sampled at 1000 Hz. However, the down sampled signal at 100 Hz is used. Each subject performed 280 trials having equal number of trials from each of the two motor imaginary tasks. From the 118 channels of data, only the following 24 channels data is used (Fp1, Fp2, F3, F4, F7, F8, FC3, FC4, FT7, FT8, T7, T8, P3, P4, P7, P8, C3, C4, CP3, CCP4, TP7, TP8, O1, O2). This down sampled signal of 24 channels is used for further processing and is referred to as data from here onwards.

B. Pre-processing, Feature Extraction and Classification

The overall block diagram of the proposed method is shown in Fig. 1. The data was firstly centered to make its mean zero followed by the whitening process. The whitened signal is then normalized and passed through five bandpass filter banks namely theta (0-4 Hz), delta (4-8 Hz), alpha (8-14 Hz), beta (14-30 Hz) and gamma (30-50 Hz). Windowing is then applied to the filtered data having a window size of 0.80 seconds with an overlap of 75 percent. The LPC and cepstrum features are then extracted from each of the window data.

In LPC, the signal is approximated as a linear combination of past p samples of the signal, where p represents the order of prediction. The predicted signal $\hat{s}(n)$ of the present sample $s(n)$ is obtained from the past samples using (1).

$$\hat{s}(n) = -\sum_{k=1}^{k=p} a_k s(n-k) \quad (1)$$

Cepstrum coefficients are obtained by taking the inverse Fourier transform of the logarithm of the magnitude spectrum of the signal. All processing is carried out in MATLAB except for the training and testing phase, which is carried out using WEKA.

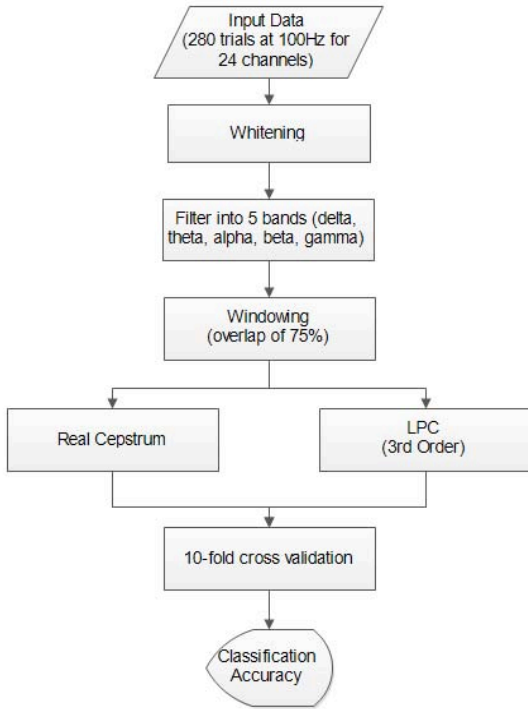


Fig. 1. Proposed cepstrum + LPC feature extraction method.

The MATLAB signal processing toolbox functions *lpc* and *rceps* are used to perform the 3rd order LPC and real cepstrum analysis, respectively. LPC coefficients C_1 , C_2 and C_3 are used as features while C_0 is ignored. When real cepstrum is performed, the cepstrum coefficients and the unique phase sequence is obtained. The maximum and minimum of the unique phase sequence is used as features. Therefore, each feature vector is 24 (channels) \times 5 (bands) \times 5 (features: 3 LPC features and 2 cepstrum features), which gives a total of 600 features for each windowed data.

Finally, the feature vectors are fed to a random forest classifier to train and test the accuracy of the trained classifier model.

IV. RESULTS AND DISCUSSIONS

A range of window sizes (0.50s, 0.80s, 1.00s, 1.50s and 2.00s) and overlap (25%, 50% and 75%) have been tested. However, window size of 0.80s and overlap of 75% produced the optimal results and are hence used in the pre-processing stage. Three separate experiments were carried out in order to evaluate and show the significance of the fusion of LPC and cepstrum features. The feature vectors [(i) with three LPC features; (ii) with two cepstrum features; (iii) with LPC and cepstrum features concatenated together] are fed as the input to the random forest classifier (various classifiers such as SVM, random committee, and rotation forest have been tested however random forest gives the best result and thus have been used in this paper). Different number of LPC features have been tested however using only three LPC coefficients gave similar results compared to using 12 LPC coefficients as features. Hence only three LPC coefficients have been used as LPC features in this work. 10-fold cross validation (with 80% of data used as training data and 20% as test data) is used for evaluating the performance of each of the feature extraction methods. For each subject, ten trial runs were carried out and the averages of the results obtained were taken. The average accuracies (across the five subjects) of the ten trial runs for the three experiments is plotted in Fig. 2. It can be noted that for subjects *aa* and *al*, the classification accuracies of the method with the cepstrum and LPC features concatenated are a little less than that of using only cepstrum features. However, for the other three subject (*av*, *aw* and *ay*) it is quite evident that the fusion of the cepstrum and LPC features results in an increase in the classification accuracy as the results are greater than that of classification accuracies obtained when only cepstrum or LPC features are used. The fusion of the cepstrum and LPC features shows that the average of all five subjects' classification accuracy increases by 2% to 4% with respect to that of when only cepstrum or LPC features are used.

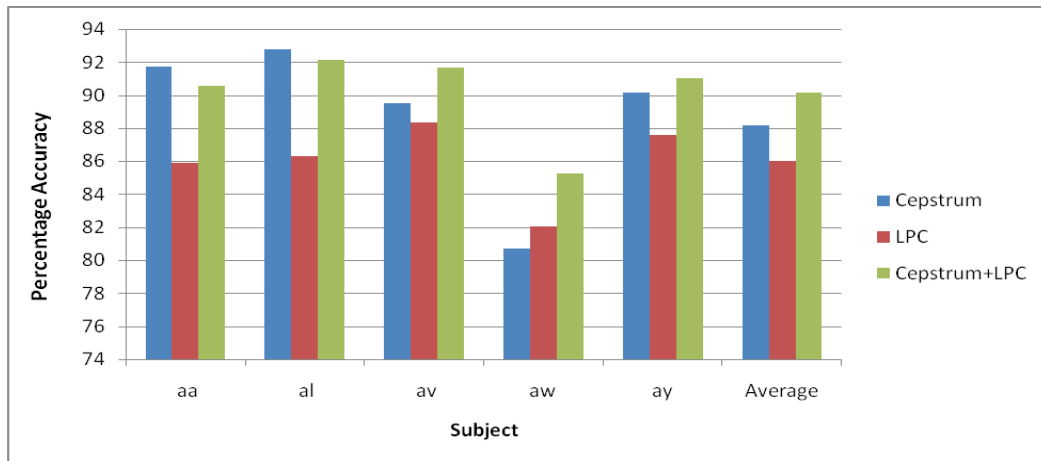


Fig. 2. Average 10-fold cross validation accuracies of all subjects.

TABLE I. 10x10-FOLD CROSS VALIDATION ERRORS OF DIFFERENT METHODS

No.	Method	Window Size (seconds)	Classifier	Percentage (%) Classification Error					
				Subject <i>aa</i>	Subject <i>al</i>	Subject <i>av</i>	Subject <i>aw</i>	Subject <i>ay</i>	Average
1	CSSSP [45]	2	SVM	11.6 ± 6.3	2.1 ± 2.7	31.8 ± 7.7	6.5 ± 4.5	10.5 ± 5.7	12.50
2	RBE [26]	2	SVM	9.2 ± 4.5	2.2 ± 3.4	31.0 ± 7.3	4.2 ± 3.3	5.0 ± 3.4	10.30
3	FBCSP [50]	2	SVM	6.93 ± 0.58	0.97 ± 0.24	31.0 ± 1.42	4.90 ± 0.89	6.18 ± 0.97	9.99
4	CSP+DS [45]	2	SVM	7.3 ± 5.1	0.9 ± 1.9	22.5 ± 7.8	2.8 ± 3.1	5.5 ± 4.3	7.80
5	Sparsity-aware [58]	2	SVM	19.64 ± 12.81	4.64 ± 4.48	28.93 ± 7.08	2.14 ± 1.96	6.43 ± 2.99	12.36
6	Cepstrum+LPC	0.8	RF	9.44 ± 0.96	7.87 ± 0.78	8.32 ± 0.61	14.76 ± 0.82	8.97 ± 0.53	9.87

In Table 1, the error rates of all five subjects together with the average error of the proposed cepstrum+LPC feature extraction method is shown along with other methods that have used the same dataset for performance evaluation. From the results obtained, it can be analyzed that the use of only cepstrum or LPC features does not give very promising results and the average individual error rates are higher than other feature extraction methods depicted in Table 1. All the other methods have used a window size of 2s with SVM as the classifier. However, 10-fold cross validation is used by all methods to evaluate the performance in terms of classification errors. It is noted that compared to other methods the average classification error of the proposed cepstrum+LPC feature extraction method does not give the best results however, the results are promising. The method outperforms the CSSSP, RBE, and FBCSP feature extraction methods. Analyzing the results for the individual subjects, the cepstrum+LPC method gives optimal results for subject *av*. For subjects *aa*, *al*, *aw* and *ay* the classification error rate of the proposed cepstrum+LPC method is not the best. However, the individual subject results are also promising. The proposed method performed worst for subject *aw* having a classification error of 14.76% while the best performance was noted for subject *al* having an error rate of 7.87%. Cepstrum and LPC features are computationally less expensive compared to other methods such as CSP, CSSSP, and FBCSP. Usually the data transfer rate in BCI applications is slow. Therefore, a smaller window size would be also advantageous when real time implementation is required.

The size of each feature vector used in this research as mentioned is 600. To reduce the dimensionality of the feature vectors, the widely used principle component analysis (PCA) [59] and linear discriminant analysis (LDA) [60-63] can be applied. Dimensionality reduction has not been carried out in this research and will be considered later.

V. CONCLUSIONS

In this work, it is shown that speech processing features such as cepstrum and LPC can be applied to the field of biomedical signal processing. The results obtained are promising and provides the basis for further research in the use of speech processing features for biomedical signal classification.

Some post-processing techniques such as cepstral weighting, cepstral mean subtraction (CMS), pole-filtered cepstral mean subtraction (PFCMS), adaptive component weighted cepstrum (ACWC), and post-filter cepstrum have not been used, and will be addressed and evaluated later by expanding the proposed method. Also, the use of MFCC features will be studied.

References

- [1] A. C. Lopes, G. Pires, and U. Nunes, "Assisted navigation for a brain-actuated intelligent wheelchair," *Robot. Auton. Syst.*, vol. 61, pp. 245-258, 2013.
- [2] R. S. Naveen and A. Julian, "Brain computing interface for wheelchair control," in *Computing, Communications and Networking Technologies (ICCCNT), 2013 Fourth International Conference on*, 2013, pp. 1-5.
- [3] A. Akce, M. Johnson, O. Dantsker, and T. Bretl, "A Brain Machine Interface to Navigate a Mobile Robot in a Planar Workspace: Enabling Humans to Fly Simulated Aircraft With EEG," *Neural Systems and Rehabilitation Engineering, IEEE Transactions on*, vol. 21, pp. 306-318, 2013.
- [4] S. Ramesh, M. G. Krishna, and M. Nakirekanti, "Brain Computer Interface System for Mind Controlled Robot using Bluetooth," *International Journal of Computer Applications*, vol. 104, pp. 20-23, October 2014.
- [5] C. Yongwook, J. Sungho, and J. Jaeseung, "Brain-actuated humanoid robot navigation control using asynchronous Brain-Computer Interface," in *Neural Engineering (NER), 2011 5th International IEEE/EMBS Conference on*, 2011, pp. 519-524.
- [6] B. Choi and S. Jo, "A Low-Cost EEG System-Based Hybrid Brain-Computer Interface for Humanoid Robot Navigation and Recognition," *PLOS one*, vol. 8, p. e74583, 2013.
- [7] S. P. Levine, J. E. Huggins, S. L. BeMent, R. K. Kushwaha, L. A. Schuh, E. A. Passaro, *et al.*, "Identification of electrocorticogram patterns as the basis for a direct brain interface," *Journal of Clinical Neurophysiology*, vol. 16, pp. 439-447, 1999.
- [8] J. P. Donoghue, "Connecting cortex to machines: recent advances in brain interfaces," *Nat Neurosci.*, 10/28/online 2002.
- [9] J. R. Wolpaw, N. Birbaumer, D. J. McFarland, G. Pfurtscheller, and T. M. Vaughan, "Brain-computer interfaces for communication and control," *Clinical Neurophysiology*, vol. 113, pp. 767-791, 6// 2002.
- [10] A. Vallabhaneni, T. Wang, and B. He, "Brain-Computer Interface," in *Neural Engineering*, B. He, Ed., ed: Springer US, 2005, pp. 85-121.
- [11] S. Jirayucharensak, S. Pan-Ngum, and P. Israsena, "EEG-Based Emotion Recognition Using Deep Learning Network with Principal Component Based Covariate Shift Adaptation," *The Scientific World Journal*, vol. 2014, p. 10, 2014.
- [12] P. P. Acharjee, R. Phlypo, L. Wu, V. D. Calhoun, and T. Adali, "Independent Vector Analysis for Gradient Artifact Removal in Concurrent EEG-fMRI Data," *Biomedical Engineering, IEEE Transactions on*, vol. 62, pp. 1750-1758, 2015.

- [13] A. Sohrabpour, Y. Lu, P. Kankirawatana, J. Blount, H. Kim, and B. He, "Effect of EEG electrode number on epileptic source localization in pediatric patients," *Clinical Neurophysiology*, vol. 126, pp. 472-480, 3// 2015.
- [14] H. Woehrle, M. M. Krell, S. Straube, S. K. Kim, E. A. Kirchner, and F. Kirchner, "An Adaptive Spatial Filter for User-Independent Single Trial Detection of Event-Related Potentials," *Biomedical Engineering, IEEE Transactions on*, vol. 62, pp. 1696-1705, 2015.
- [15] T. Yu, J. Xiao, F. Wang, R. Zhang, Z. Gu, A. Cichocki, et al., "Enhanced Motor Imagery Training Using a Hybrid BCI With Feedback," *Biomedical Engineering, IEEE Transactions on*, vol. 62, pp. 1706-1717, 2015.
- [16] B. Graimann, B. Allison, and G. Pfurtscheller, "Brain-Computer Interfaces: A Gentle Introduction," in *Brain-Computer Interfaces*, B. Graimann, G. Pfurtscheller, and B. Allison, Eds., ed: Springer Berlin Heidelberg, 2010, pp. 1-27.
- [17] (16 September). *Neurosky: EEG Headsets*. Available: <http://store.neurosky.com/collections/eeeg-headsets>
- [18] (16 September). *Emotiv eStore: EPOC Headset*. Available: <https://emotiv.com/store/>
- [19] A. Sharma and K. K. Paliwal, "Subspace independent component analysis using vector kurtosis," *Pattern Recognition*, vol. 39, pp. 2227-2232, November 2006.
- [20] S. Shi-Yun, S. Kai-Quan, O. Chong Jin, E. Wilder-Smith, and L. Xiao-Ping, "Automatic EEG Artifact Removal: A Weighted Support Vector Machine Approach With Error Correction," *Biomedical Engineering, IEEE Transactions on*, vol. 56, pp. 336-344, 2009.
- [21] N. P. Castellanos and V. A. Makarov, "Recovering EEG brain signals: Artifact suppression with wavelet enhanced independent component analysis," *Journal of Neuroscience Methods*, vol. 158, pp. 300-312, December 2006.
- [22] M. Crespo-Garcia, M. Atienza, and J. L. Cantero, "Muscle Artifact Removal from Human Sleep EEG by Using Independent Component Analysis," *Annals of Biomedical Engineering*, vol. 36, pp. 467-475, March 2008.
- [23] R. Vigarito, J. Sarela, V. Jousmiki, Ha, x, ma, et al., "Independent component approach to the analysis of EEG and MEG recordings," *Biomedical Engineering, IEEE Transactions on*, vol. 47, pp. 589-593, 2000.
- [24] N.-H. Liu, C.-Y. Chiang, and H.-C. Chu, "Recognizing the Degree of Human Attention Using EEG Signals from Mobile Sensors," *Sensors*, vol. 13, pp. 10273-10286, August 2013.
- [25] K. K. Ang, Z. Y. Chin, H. Zhang, and C. Guan, "Filter Bank Common Spatial Pattern (FBCSP) in Brain-Computer Interface," in *IEEE International Joint Conference on Neural Networks (IEEE World Congress on Computational Intelligence)*, Hong Kong, 2008, pp. 2390 - 2397.
- [26] Q. Novi, G. Cuntai, T. H. Dat, and X. Ping, "Sub-band Common Spatial Pattern (SBCSP) for Brain-Computer Interface," in *Neural Engineering, 2007. CNE '07. 3rd International IEEE/EMBS Conference on*, 2007, pp. 204-207.
- [27] D. L. Rocca, P. Campisi, B. Vegso, P. Cserti, G. Kozmann, F. Babiloni, et al., "Human Brain Distinctiveness Based on EEG Spectral Coherence Connectivity," *IEEE Transactions on Biomedical Engineering*, vol. 61, pp. 2406-2412, September 2014.
- [28] A. Zhang, B. Yang, and L. Huang, "Feature Extraction of EEG Signals Using Power Spectral Entropy," in *International Conference on BioMedical Engineering and Informatics*, Sanya, 2008, pp. 435 - 439.
- [29] M. Sabeti, S. Katebi, and R. Boostani, "Entropy and complexity measures for EEG signal classification of schizophrenic and control participants," *Artificial Intelligence in Medicine*, vol. 47, pp. 263-274, 11// 2009.
- [30] U. Wijeratne and U. Perera, "Intelligent emotion recognition system using electroencephalography and active shape models," in *Biomedical Engineering and Sciences (IECBES), 2012 IEEE EMBS Conference on*, 2012, pp. 636-641.
- [31] X. Li, X. Chen, Y. Yan, W. Wei, and Z. J. Wang, "Classification of EEG Signals Using a Multiple Kernel Learning Support Vector Machine," *Sensors*, vol. 14, pp. 12784-12802, July 2014.
- [32] L. Yuan-Pin, W. Chi-Hong, W. Tien-Lin, J. Shyh-Kang, and C. Jyh-Horn, "Support vector machine for EEG signal classification during listening to emotional music," in *Multimedia Signal Processing, 2008 IEEE 10th Workshop on*, 2008, pp. 127-130.
- [33] L. Mu and L. Bao-Liang, "Emotion classification based on gamma-band EEG," in *Engineering in Medicine and Biology Society, 2009. EMBC 2009. Annual International Conference of the IEEE*, 2009, pp. 1223-1226.
- [34] L. Yuan-Pin, W. Chi-Hong, J. Tzzy-Ping, W. Tien-Lin, J. Shyh-Kang, D. Jeng-Ren, et al., "EEG-Based Emotion Recognition in Music Listening," *Biomedical Engineering, IEEE Transactions on*, vol. 57, pp. 1798-1806, 2010.
- [35] D. Nie, X.-W. Wang, L.-C. Shi, and B.-L. Lu, "EEG-based emotion recognition during watching movies," in *5th International IEEE/EMBS Conference on Neural Engineering (NER)*, Cancun, Mexico, 2011, pp. 667-670.
- [36] N. Jatupaiboon, S. Pan-ngum, and P. Israsena, "Emotion classification using minimal EEG channels and frequency bands," in *Computer Science and Software Engineering (JCSSE), 2013 10th International Joint Conference on*, 2013, pp. 21-24.
- [37] L. Brown, B. Grundlehner, and J. Penders, "Towards wireless emotional valence detection from EEG," in *Engineering in Medicine and Biology Society, EMBC, 2011 Annual International Conference of the IEEE*, 2011, pp. 2188-2191.
- [38] X. Haiyan and K. N. Plataniotis, "Affect recognition using EEG signal," in *Multimedia Signal Processing (MMSp), 2012 IEEE 14th International Workshop on*, 2012, pp. 299-304.
- [39] E. Parvinnia, M. Sabeti, M. Z. Jahromi, and R. Boostani, "Classification of EEG Signals using adaptive weighted distance nearest neighbor algorithm," *Journal of King Saud University - Computer and Information Sciences*, vol. 26, pp. 1-6, 2014.
- [40] F. Akram, H.-S. Han, and T.-S. Kim, "A P300-Based Word Typing Brain Computer Interface System Using a Smart Dictionary and Random Forest Classifier," in *The Eighth International Multi-Conference on Computing in the Global Information Technology*, 2013, pp. 106-109.
- [41] A. Sharma, K. K. Paliwal, and G. C. Onwubolu, "Class-dependent PCA, MDC and LDA: A combined classifier for pattern classification," *Pattern Recognition*, vol. 39, pp. 1215-1229, 7// 2006.
- [42] A. Sharma and K. K. Paliwal, "Rotational Linear Discriminant Analysis Technique for Dimensionality Reduction," *Knowledge and Data Engineering, IEEE Transactions on*, vol. 20, pp. 1336-1347, 2008.
- [43] A. Sharma, S. Imoto, and S. Miyano, "A Top-r Feature Selection Algorithm for Microarray Gene Expression Data," *Computational Biology and Bioinformatics, IEEE/ACM Transactions on*, vol. 9, pp. 754-764, 2012.
- [44] A. Sharma and K. K. Paliwal, "A new perspective to null linear discriminant analysis method and its fast implementation using random matrix multiplication with scatter matrices," *Pattern Recognition*, vol. 45, pp. 2205-2213, 6// 2012.
- [45] L. Song and J. Epps, "Classifying EEG for Brain-Computer Interface: Learning Optimal Filters for Dynamical System Features," *Computational Intelligence and Neuroscience*, vol. 2007, p. 11, 2007.
- [46] L. Cao, J. Li, H. Ji, and C. Jiang, "A hybrid brain computer interface system based on the neurophysiological protocol and brain-actuated switch for wheelchair control," *Journal of Neuroscience Methods*, vol. 229, pp. 33-43, 5/30/ 2014.
- [47] F. Akram, M. K. Metwally, H. Hee-Sok, J. Hyun-Jae, and K. Tae-Seong, "A novel P300-based BCI system for words typing," in *Brain-Computer Interface (BCI), 2013 International Winter Workshop on*, 2013, pp. 24-25.
- [48] N. Jatupaiboon, S. Pan-ngum, and P. Israsena, "Real-Time EEG-Based Happiness Detection System," *The Scientific World Journal*, vol. 2013, p. 618649, July 2013.
- [49] J. Walters-Williams and Y. Li, "A New Approach to Denoising EEG Signals - Merger of Translation Invariant Wavelet and ICA," *International Journal of Biometrics and Bioinformatics (IJBB)*, vol. 5, pp. 130-148, June 2011.
- [50] K. P. Thomas, G. Cuntai, C. T. Lau, A. P. Vinod, and A. Kai Keng, "A New Discriminative Common Spatial Pattern Method for Motor Imagery Brain-Computer Interfaces," *Biomedical Engineering, IEEE Transactions on*, vol. 56, pp. 2730-2733, 2009.

- [51] R. B. Shinde and V. P. Pawar, "Fusion of MFCC & LPC Feature Sets for Accurate Speaker Identification," *International Journal of Current Engineering and Technology*, vol. 3, pp. 1763-1766, 2013.
- [52] M. A. Yunsita, M. P. Paulraj, S. Yaacob, and A. B. Shahrman, "Classification of speaker accent using hybrid DWT-LPC features and K-nearest neighbors in ethnically diverse Malaysian English," in *IEEE Symposium on Computer Applications and Industrial Electronics (ISCAIE)*, 2012, pp. 179-184.
- [53] S. M. Feraru and M. D. Zbancioc, "Emotion recognition in Romanian language using LPC features," in *E-Health and Bioengineering Conference (EHB)*, 2013, 2013, pp. 1-4.
- [54] R. Visalakshi and P. Dhanalakshmi, "Acoustic Feature Extraction Methods LPC, LPCC and RASTA-PLP in Speaker REcognition," *Asian Journal of Information Technology*, vol. 13, pp. 595-598, 2014.
- [55] G. Dornhege, B. Blankertz, G. Curio, and K. Muller, "Boosting bit rates in noninvasive EEG single-trial classifications by feature combination and multiclass paradigms," *IEEE Transactions on Biomedical Engineering*, vol. 51, pp. 993-1002, 2004.
- [56] B. Blankertz, K. R. Müller, D. J. Krusienski, G. Schalk, J. R. Wolpaw, A. Schlögl, *et al.*, "The BCI competition III: validating alternative approaches to actual BCI problems," *IEEE Transactions on Neural Systems and Rehabilitation Engineering*, vol. 14, pp. 153-159, June 2006.
- [57] T. C. T. Limited, "10/20 System Positioning," ed. Hong Kong, 2012.
- [58] N. Tomida, T. Tanaka, S. Ono, M. Yamagishi, and H. Higashi, "Active Data Selection for Motor Imagery EEG Classification," *IEEE Transactions on Biomedical Engineering*, vol. 62, pp. 458-467, 2015.
- [59] A. Sharma and K. K. Paliwal, "Fast principal component analysis using fixed-point algorithm," *Pattern Recognition Letters*, vol. 28, pp. 1151-1155, 7/15/2007.
- [60] A. Sharma, K. K. Paliwal, S. Imoto, and S. Miyano, "A feature selection method using improved regularized linear discriminant analysis," *Mach. Vision Appl.*, vol. 25, pp. 775-786, 2014.
- [61] A. Sharma and K. K. Paliwal, "A two-stage linear discriminant analysis for face-recognition," *Pattern Recognition Letters*, vol. 33, pp. 1157-1162, 7/1/2012.
- [62] A. Sharma, K. Paliwal, S. Imoto, and S. Miyano, "Principal component analysis using QR decomposition," *International Journal of Machine Learning and Cybernetics*, vol. 4, pp. 679-683, 2013/12/01 2013.
- [63] A. Sharma and K. K. Paliwal, "A deterministic approach to regularized linear discriminant analysis," *Neurocomputing*, vol. 151, Part 1, pp. 207-214, 3/3/2015.